



# SELFBRIEFING



## FATRAGLIDE

April 28 to May 7, 2025

Version 1.0

Published 22/4/2025

Martin - Slovakia

## EVENT LOCATION

Airfield: Martin  
ICAO code: LZMA  
Latitude: 490355N 0185703E  
Elevation: 1378 ft (420m)  
Runway: 18L/36R (800m) 18R/36L (800m) grass  
Frequency: Martin traffic 120,040 Mhz

More information available on:

[https://gis.lps.sk/pdf/VFRM\\_SR\\_LZMA\\_EN.pdf](https://gis.lps.sk/pdf/VFRM_SR_LZMA_EN.pdf)

# MAIN COMPETITION OFFICIALS



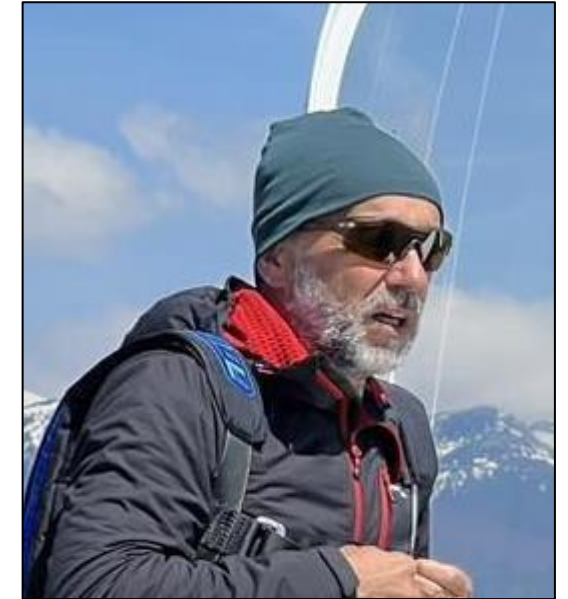
**Contest Director**  
**Sporting Director**  
Ivan Bajana  
+421 952 329 683



**Deputy**  
**Safety Director**  
Miroslav Thémár  
+421 917 277 647



**Task setter**  
Branislav Jesenský  
+421 903 996 001



**Task setter**  
Tibor Frátrik  
+421 903 996 008

# MAIN COMPETITION OFFICIALS



**Scorer**  
Zuzana Hrnčiriková  
+421 903 767 749



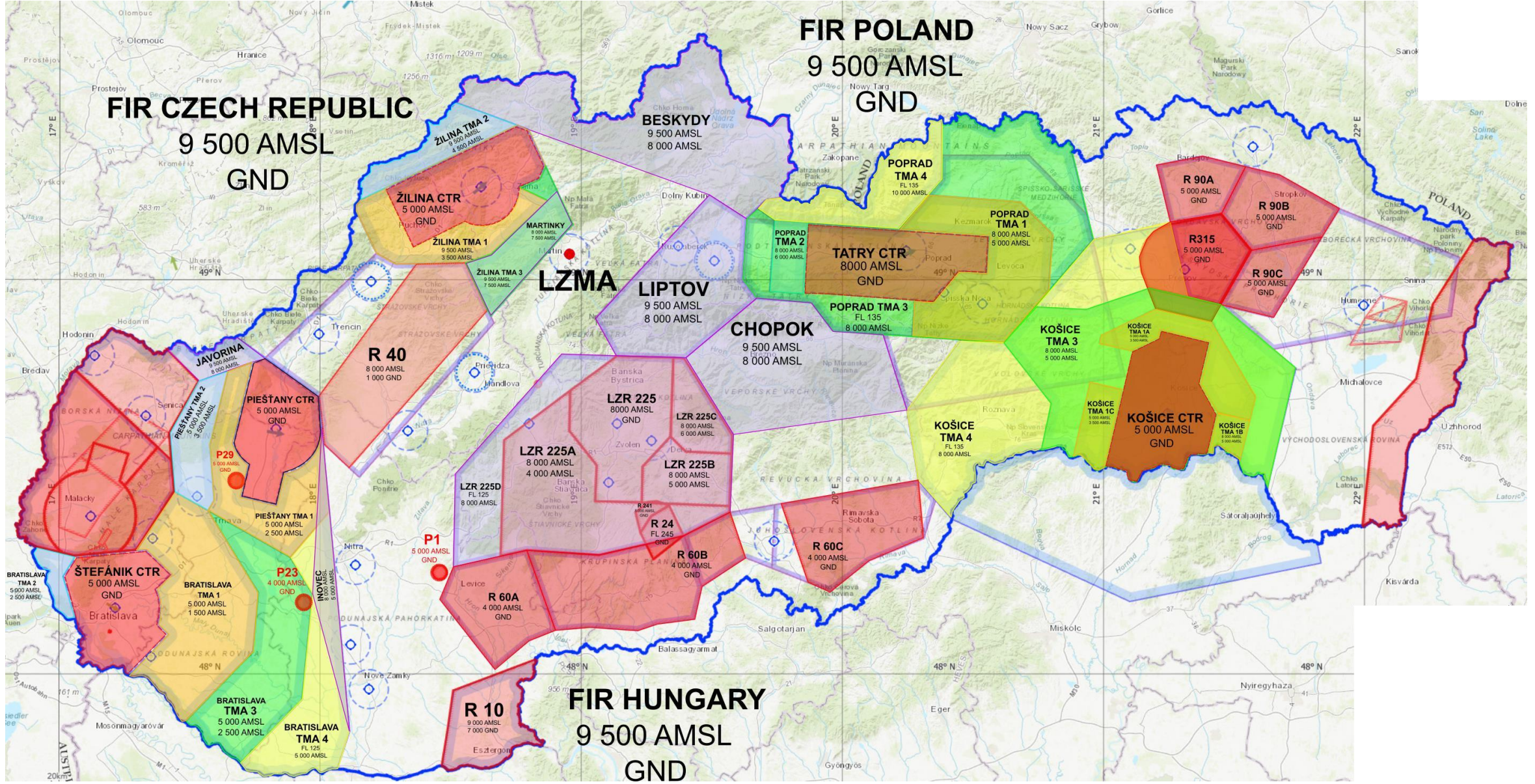
**Meteo guru**  
Jan Horák  
+420 732 226 175



**Scorer**  
Roman Dobiáš  
+421 948 505 808

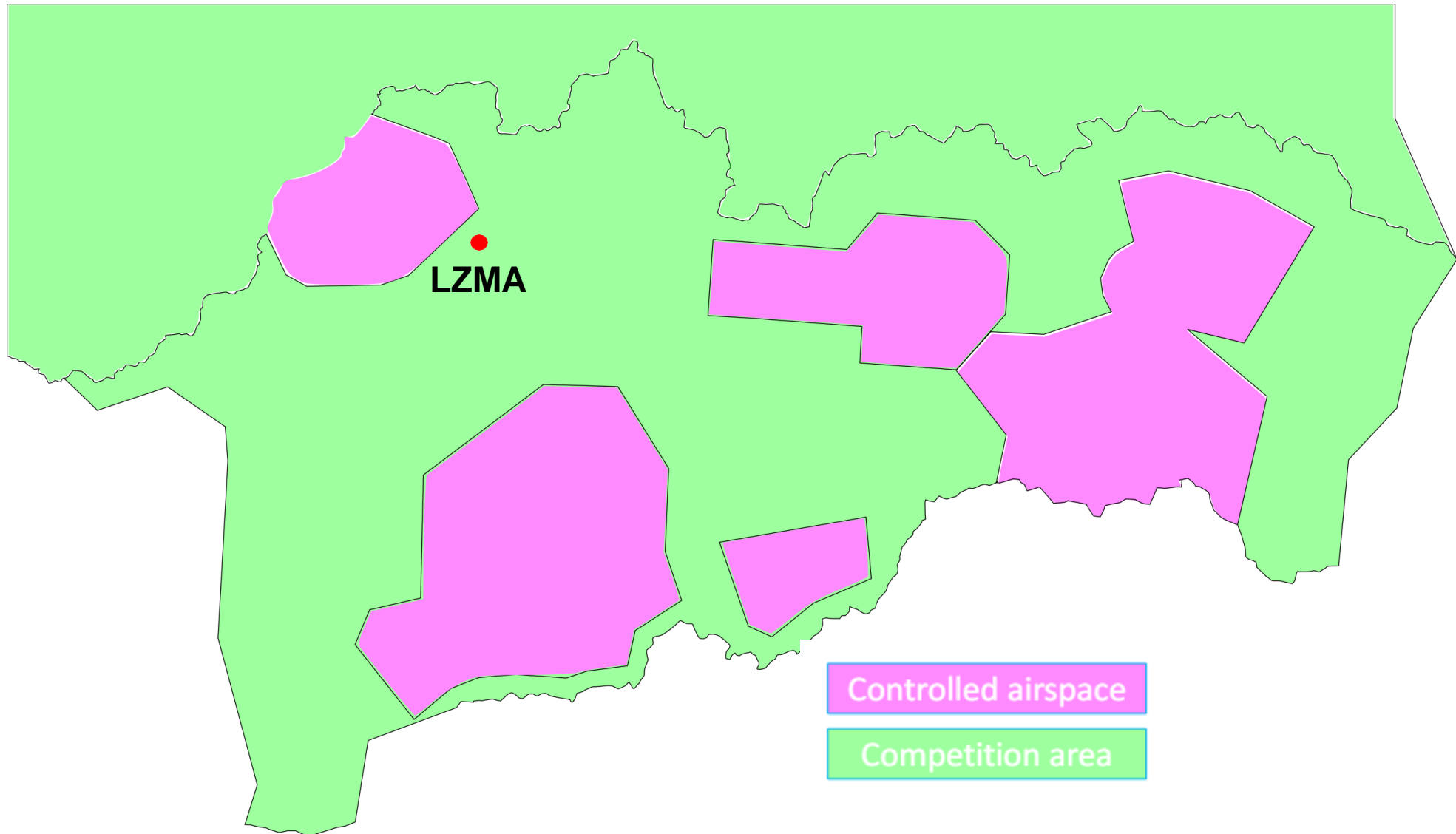


# SLOVAKIA AIRSPACE DESCRIPTION





# CONTEST AREA



# AIRFIELD DESCRIPTION





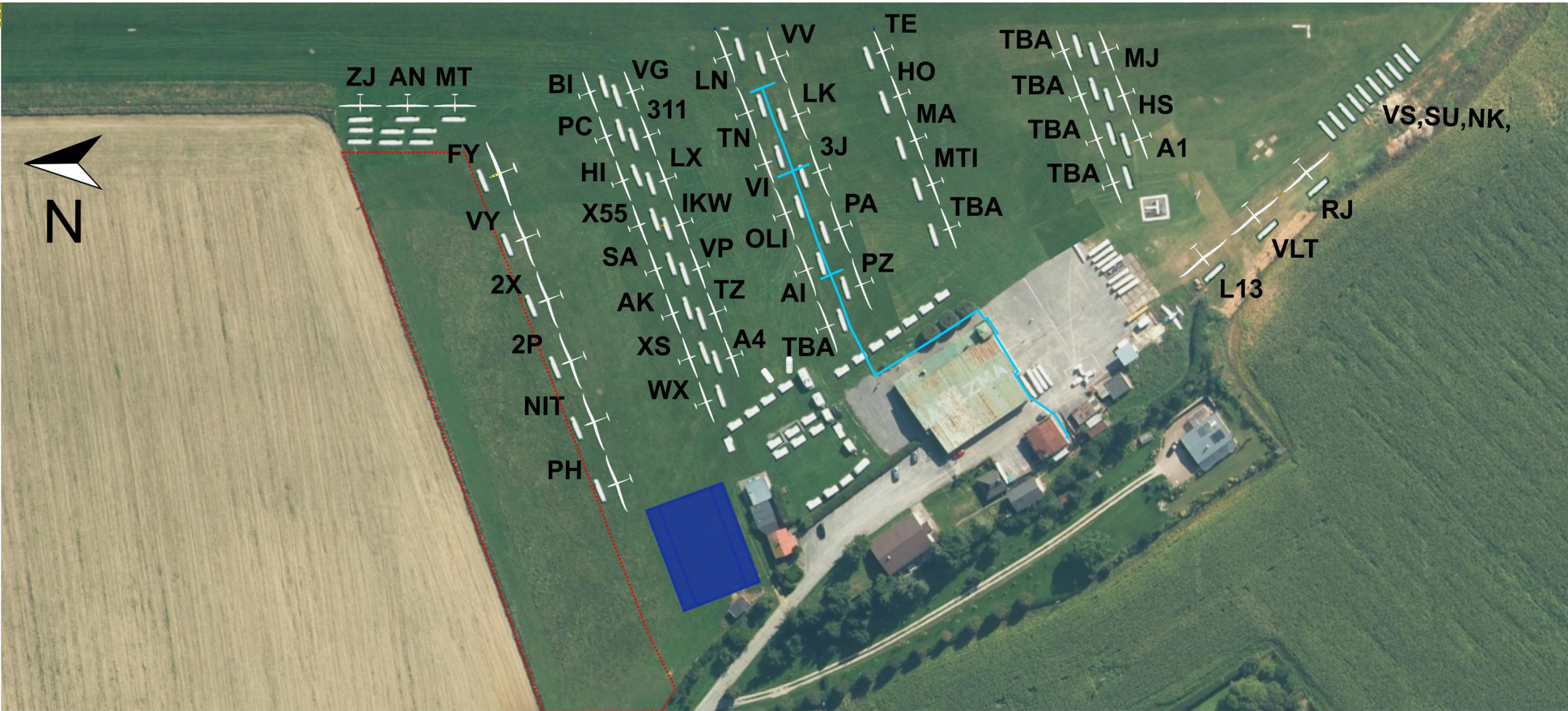
# AIRFIELD DESCRIPTION



1. Main gate
2. Competition office
3. Camp
4. Briefing room
5. Bar
6. Airport accommodation/ WC showers
7. WC + Showers
8. Water
9. Parking



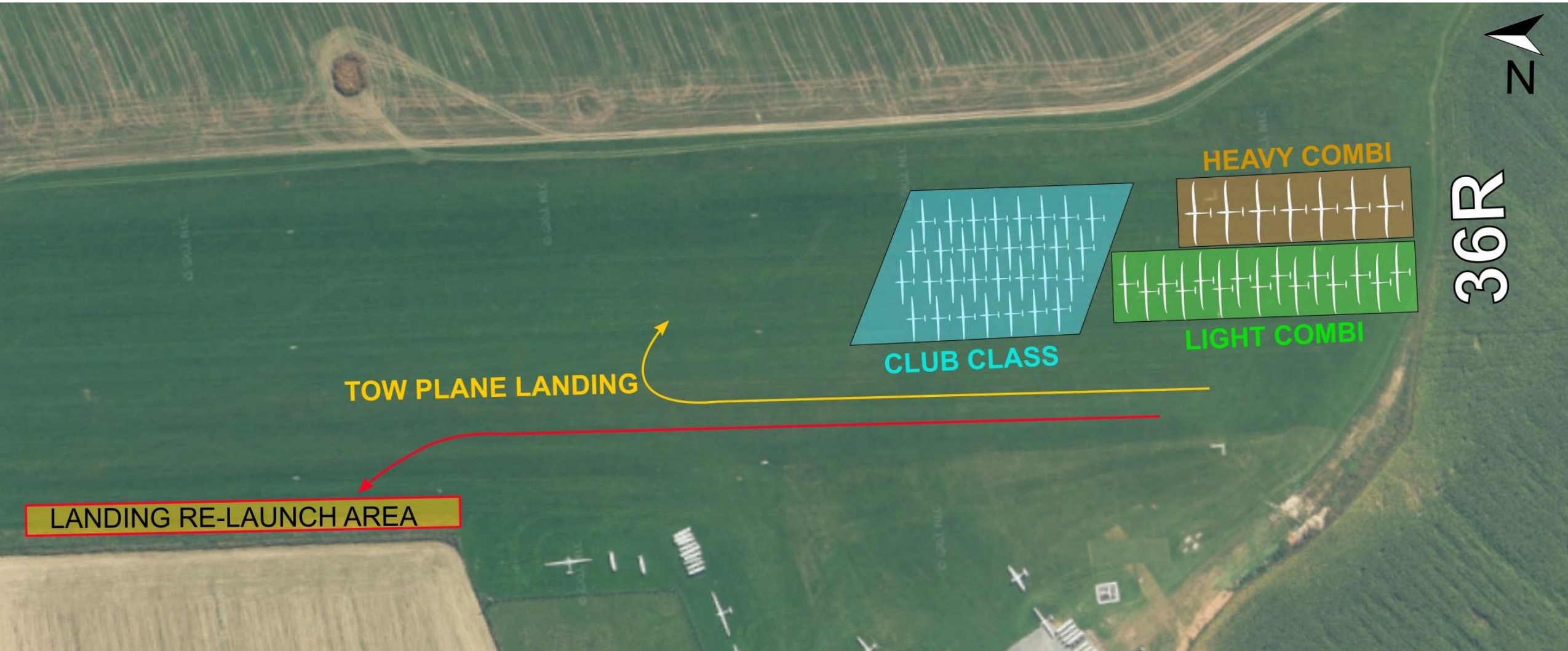
# TIEDOWN AREA DESCRIPTION



For tiedown procedure contact Contest director **Ivan Bajana** +421 952 329 683 at main gate



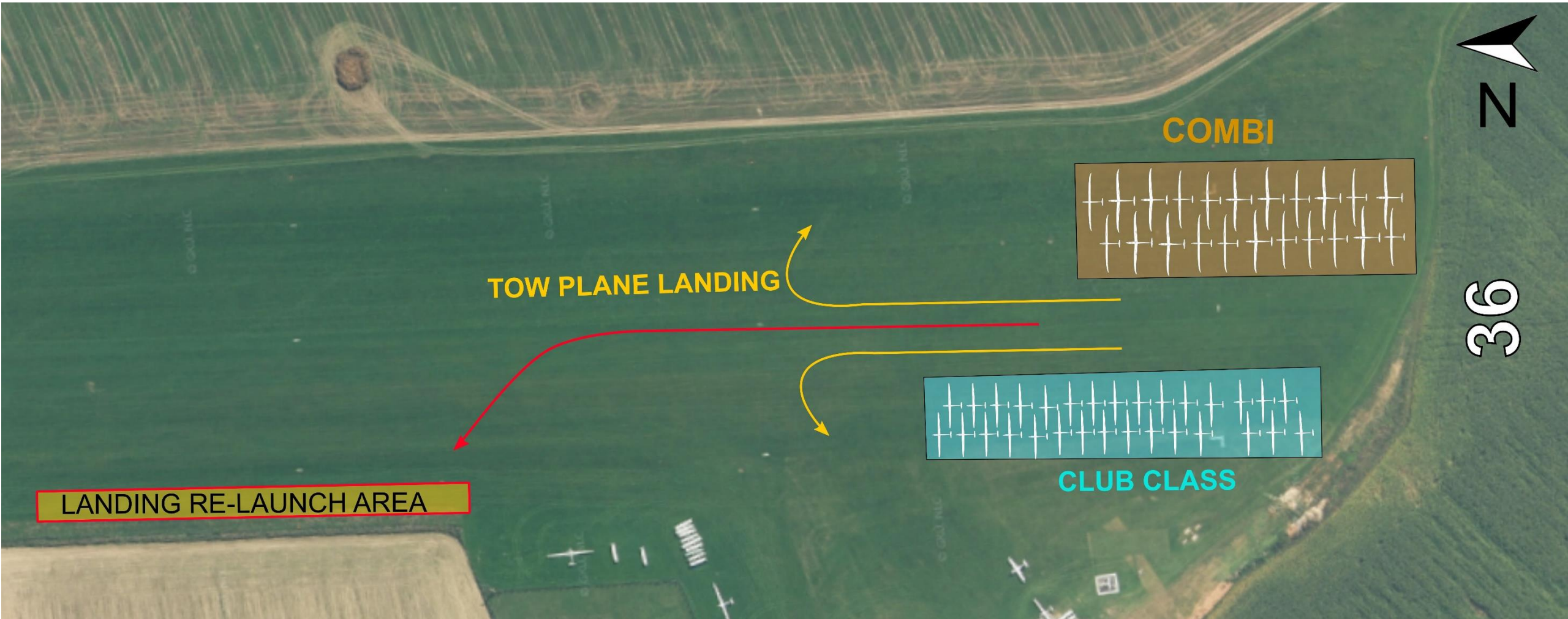
# GRID RWY 36 RIGHT „A“



**FREE GRID DURING WHOLE COMPETITION. CLUB CLASS 4 IN A ROW. HEAVY COMBI 1 IN A ROW. LIGHT COMBI 2 IN A ROW.**  
AFTER GLIDER LANDING IMMEDIATELY PUSH THE GLIDER OUT OF RWY 36  
RE-LAUNCH WILL BE POSSIBLE AFTER LAST LAUNCH OF CURRENT GLIDER CLASS

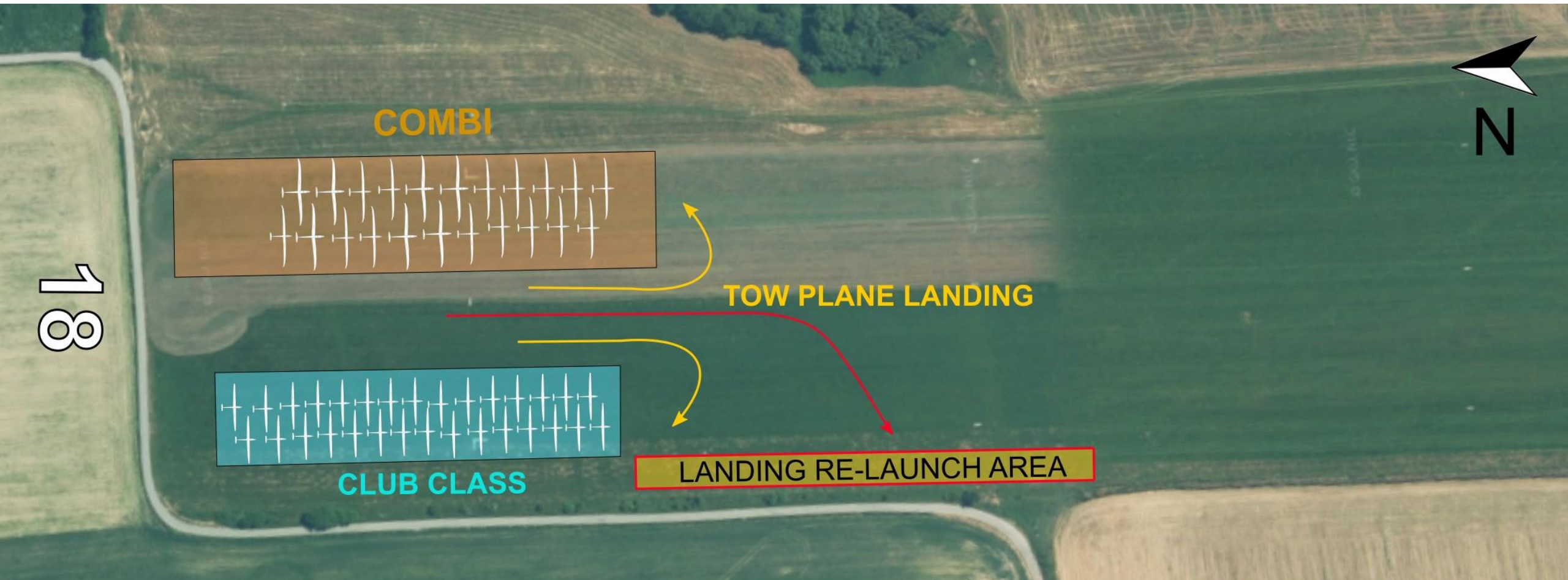


# GRID RWY 36 „B“



**FREE GRID** DURING WHOLE COMPETITION. **CLUB CLASS** 2 IN A ROW. **COMBI** 2 IN A ROW.  
AFTER GLIDER LANDING IMMEDIATELY PUSH THE GLIDER OUT OF RWY 36  
RE-LAUNCH WILL BE POSSIBLE AFTER LAST LAUNCH OF CURRENT GLIDER CLASS

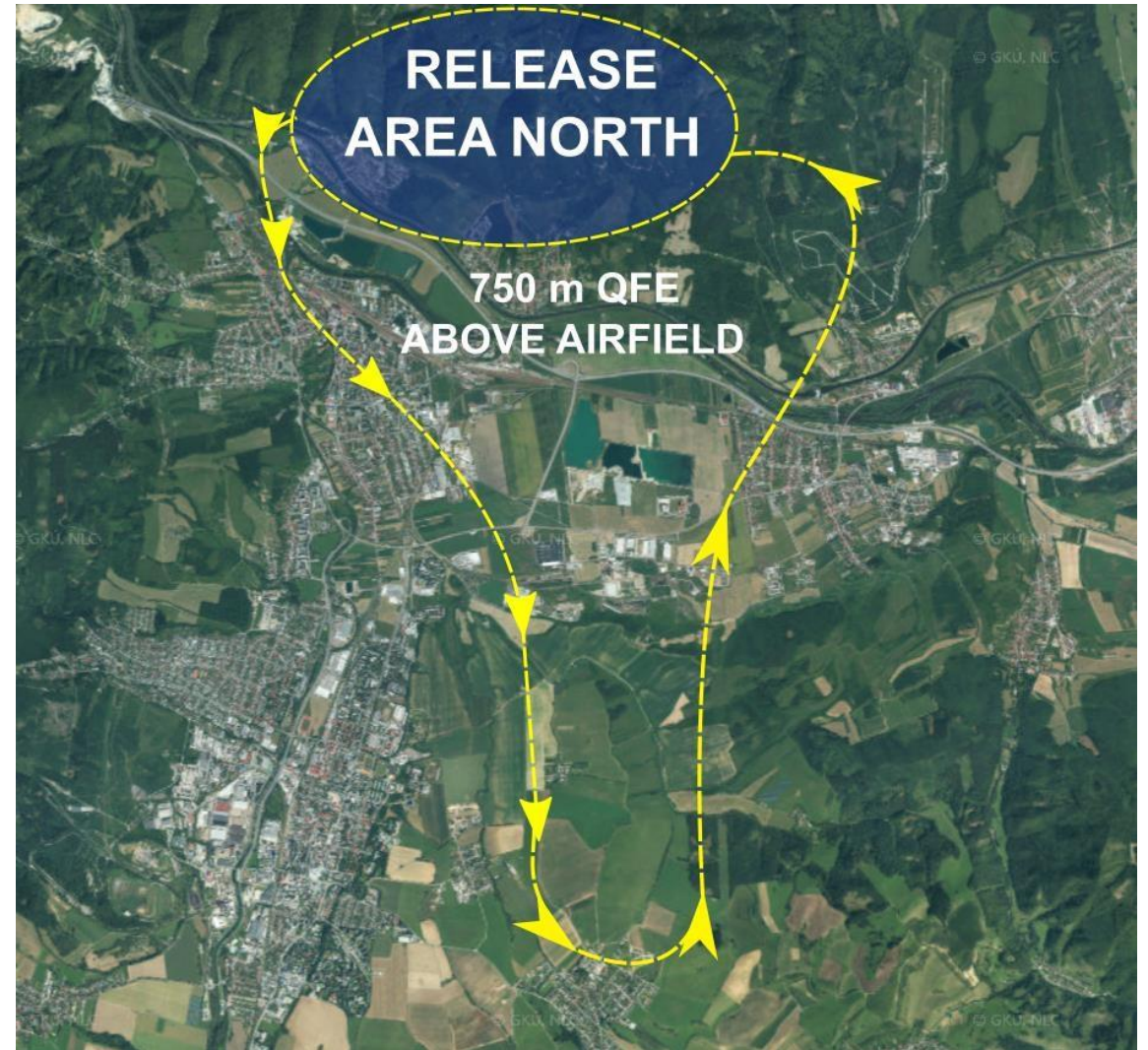
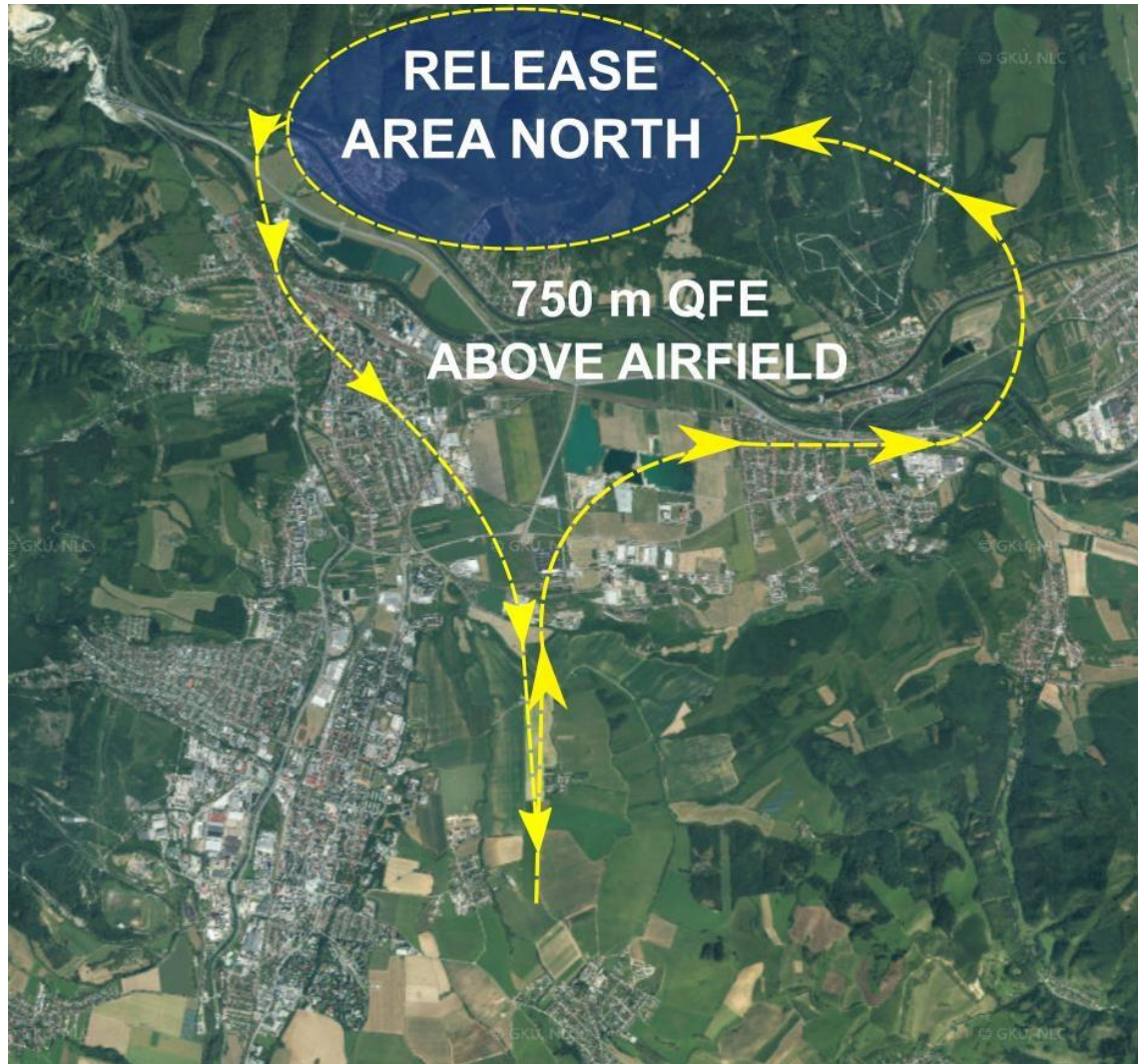
# GRID RWY 18



**FREE GRID** DURING WHOLE COMPETITION. **CLUB CLASS** 2 IN A ROW. **COMBI** 2 IN A ROW.  
AFTER GLIDER LANDING IMMEDIATELY PUSH THE GLIDER OUT OF RWY 18  
RE-LAUNCH WILL BE POSSIBLE AFTER LAST LAUNCH OF CURRENT GLIDER CLASS

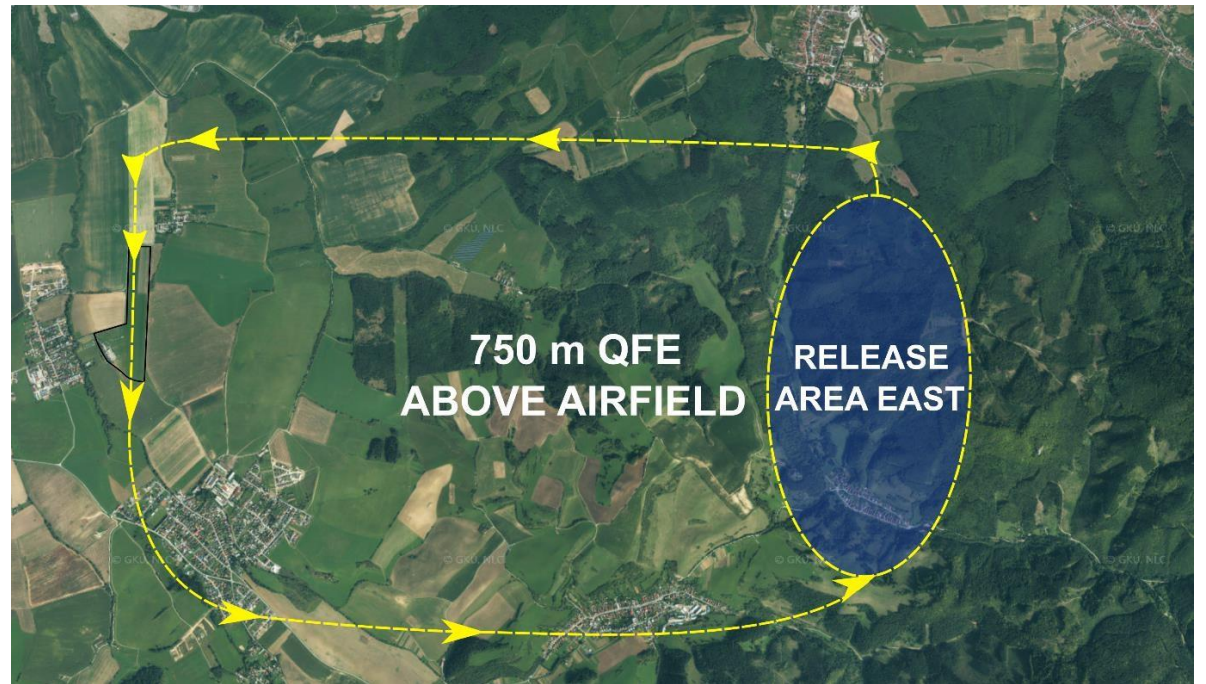
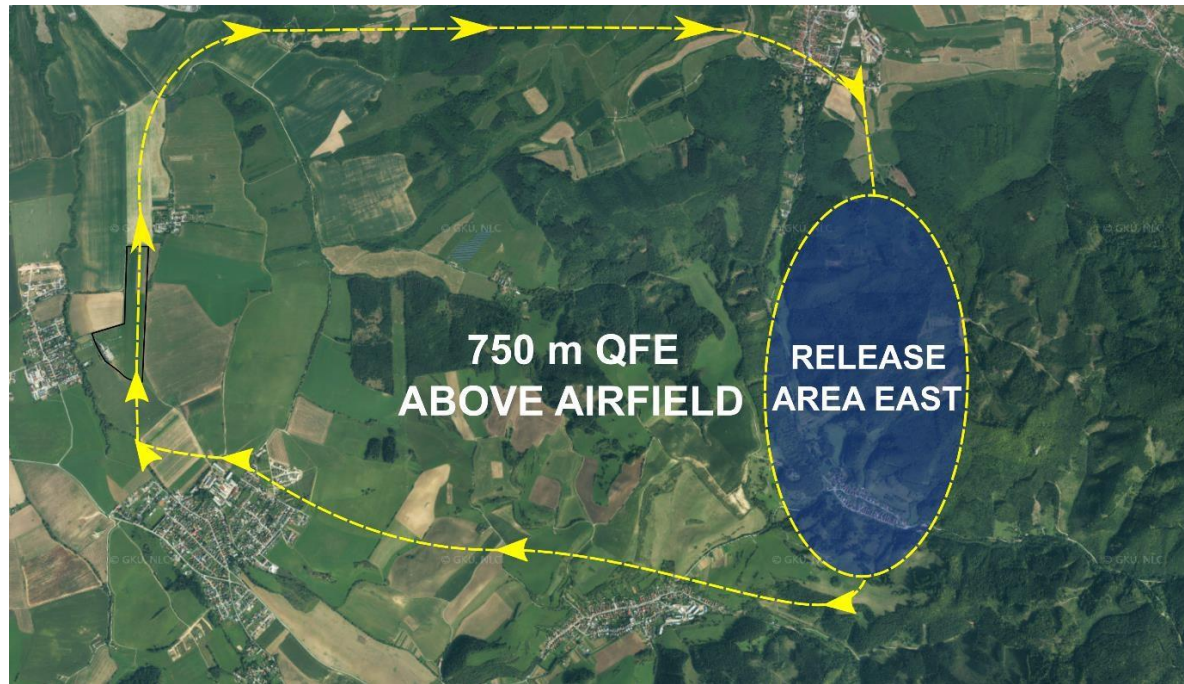


# RELEASE AREA NORTH TAKE-OFF RWY 36R/18L



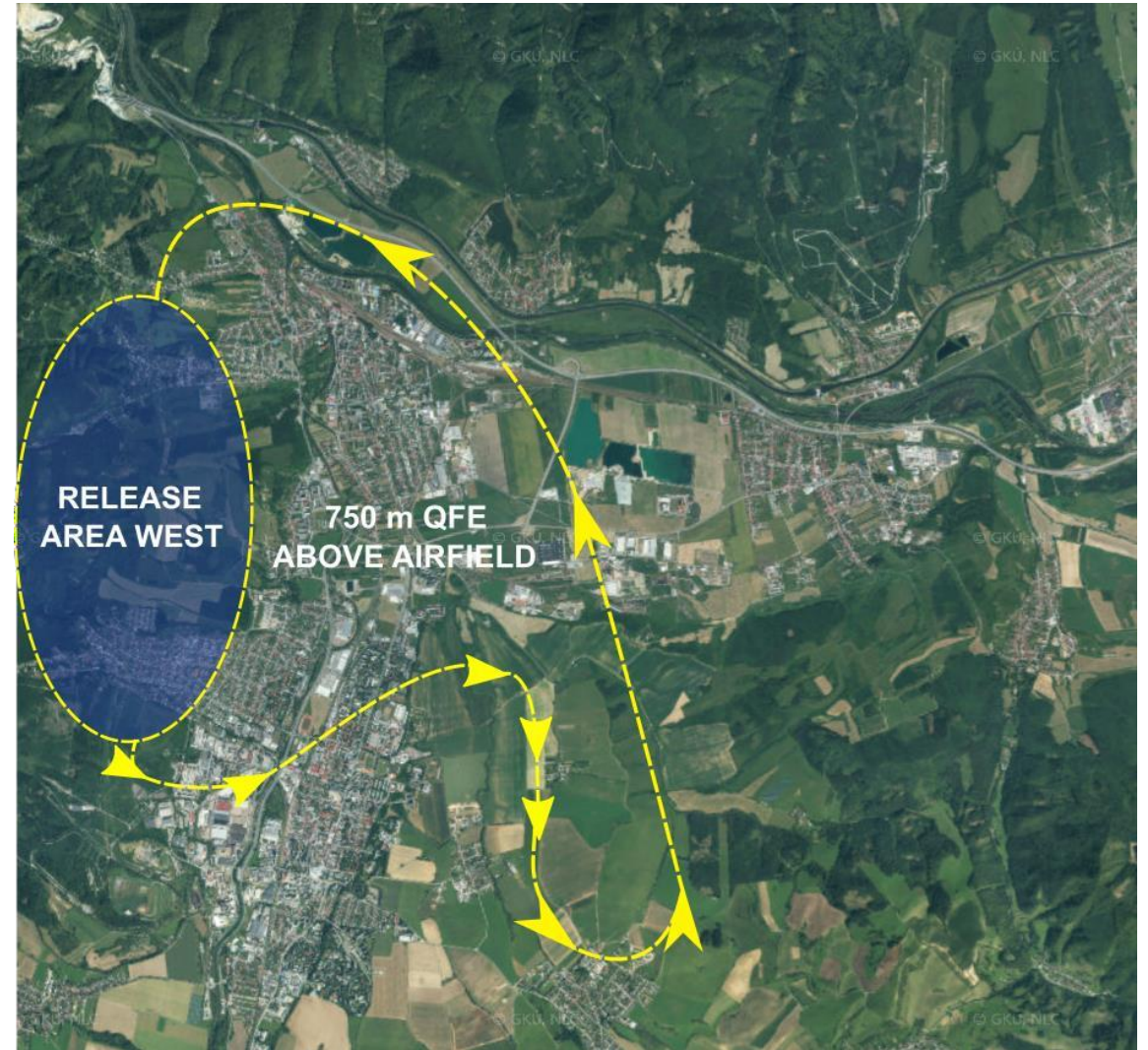
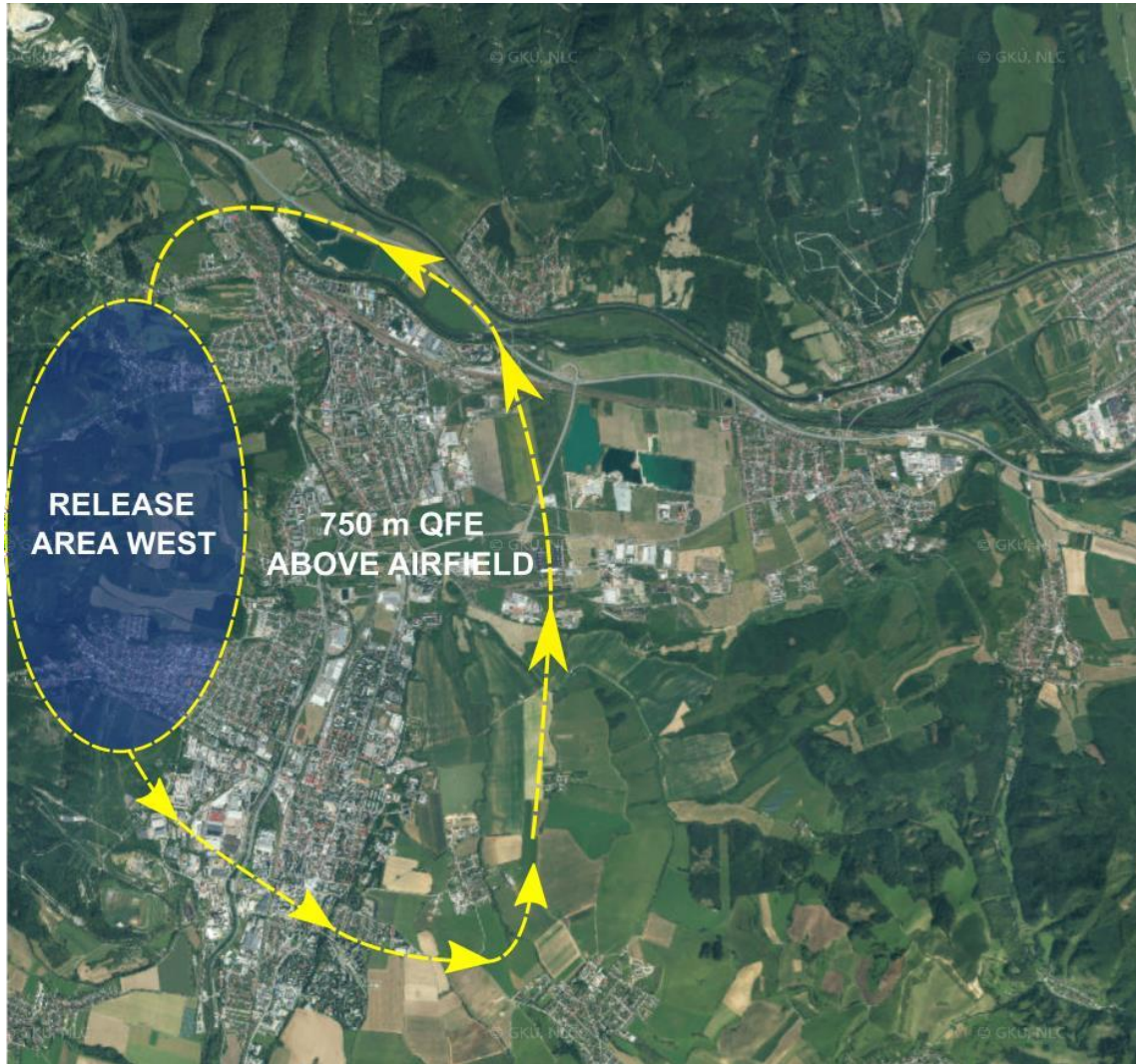


# RELEASE AREA EAST TAKE-OFF RWY 36R/18L



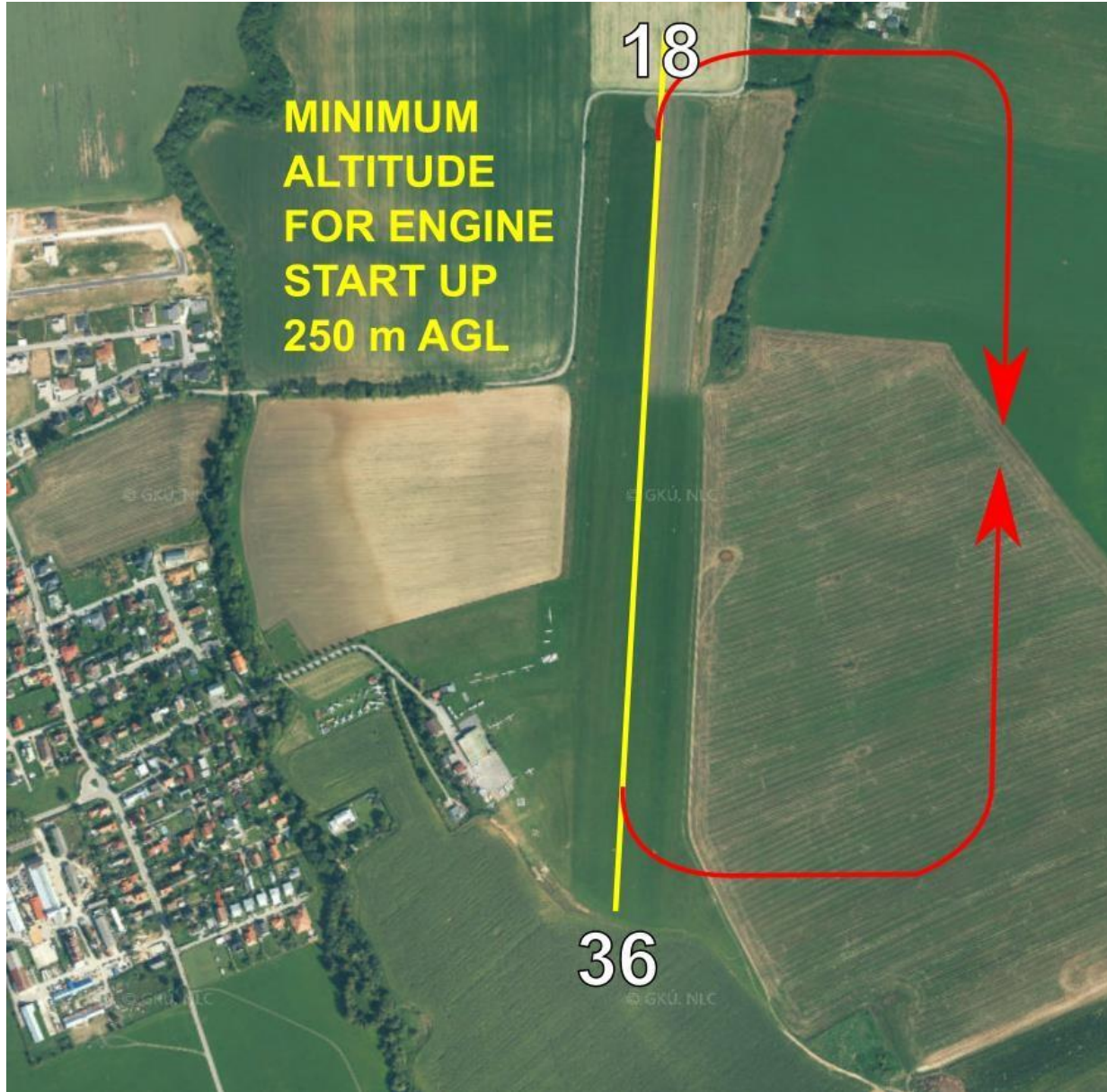


# RELEASE AREA WEST TAKE-OFF RWY 36R/18L





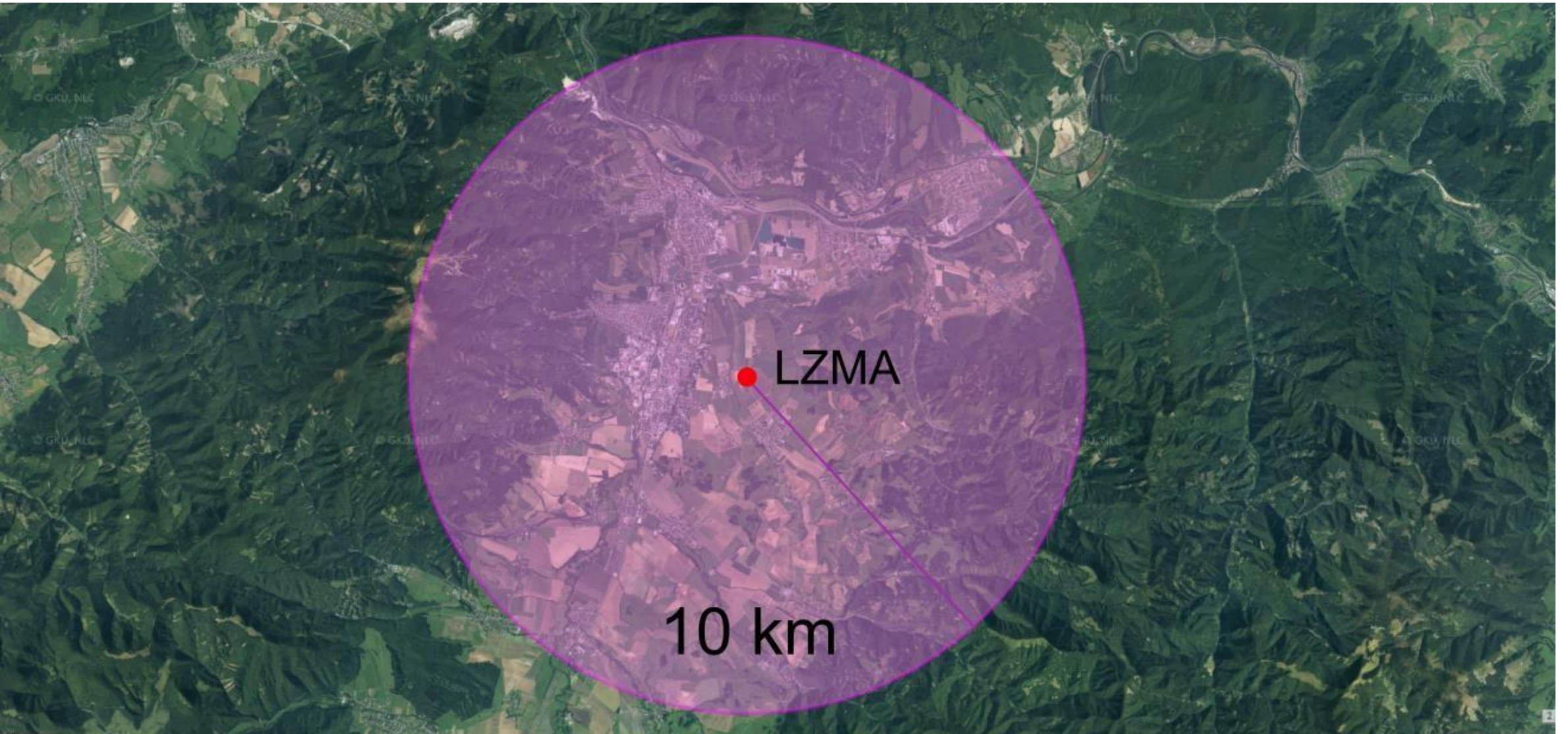
## RE-LAUNCH PROCEDURE FOR ENGINE GLIDER WITHOUT LANDING



For re-launch procedure combi class proceed above airfield 250 m AGL for starting engine then continue via left or right pattern (east sector from airfield) to launch area as standard launch procedure



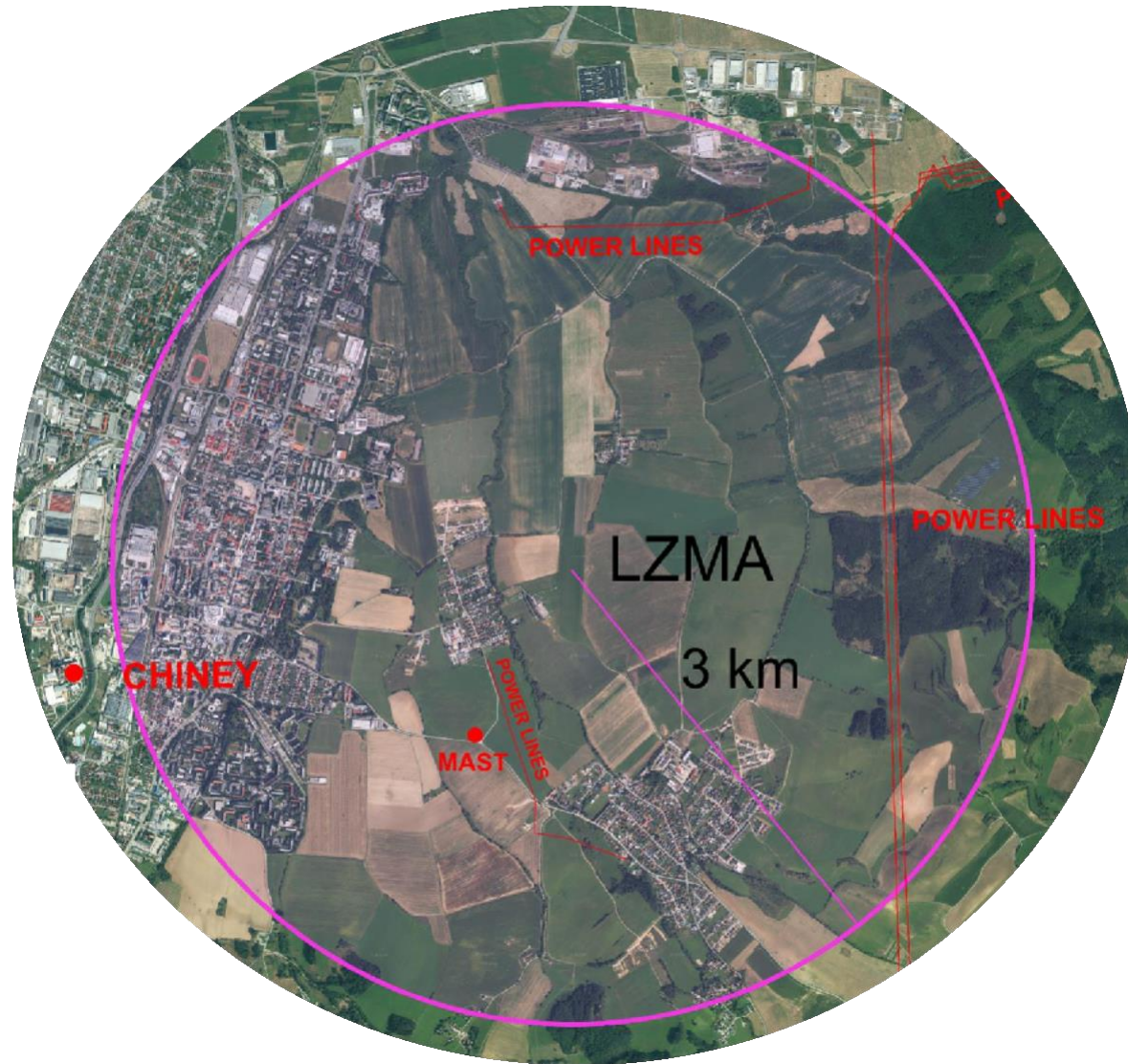
# FINISH PROCEDURE 10 KM



AT 10 km CALL MARTIN TRAFFIC ON 120,040 CONTEST NUMBER AND EXPECTED ARRIVAL DIRECTION  
„AB 10 km from SOUTH“



## FINISH PROCEDURE 3 KM



AT 3 km CALL MARTIN TRAFFIC ON 120,040 CONTEST NUMBER AND EXPECTED ARRIVAL  
„AB 3 km DIRECT LANDING“ OR „AB 3 km JOINING EAST PATTERN RWY 36“



# LANDING AREA RWY 36



LONG LANDINGS, NO TURNS ON THE GROUND, AFTER LANDING PICK UP ASAP TO TIEDOWN AREA



# LANDING AREA RWY 18



LONG LANDINGS, NO TURNS ON THE GROUND, AFTER LANDING PICK UP ASAP TO TIEDOWN AREA



## MAIN INFO SUMMARY

- **DAILY BRIEFINGS** are mandatory for every competitors
- **IGC FILE SEND** to [fatraglide25@gmail.com](mailto:fatraglide25@gmail.com) within 60 minutes after landing
- **OUTLANDING** report as soon as possible via phone number **+421 952 329 683** (competition director Ivan Bajana)
- **TRAILERS AND GLIDERS** must be fixed and tiedown
- **START LINE** 10 KM
- **MAXIMUM ALTITUDE** at start line is **NOT SET**
- **MINIMUM ALTITUDE** at finish ring radius of 3 km is **NOT SET**
- **PEV** procedures will be announced at daily briefings
- **MAX HEIGHT** of flight **8 000 ft AMSL** or **FL95** gliding area/ 10 000 ft
- **CARS** must be removed from the grid **at least 20 minutes** before commence of launches
- **ORGANISERS RESERVED** the right modify rules during competition



**SEE YOU SOON**